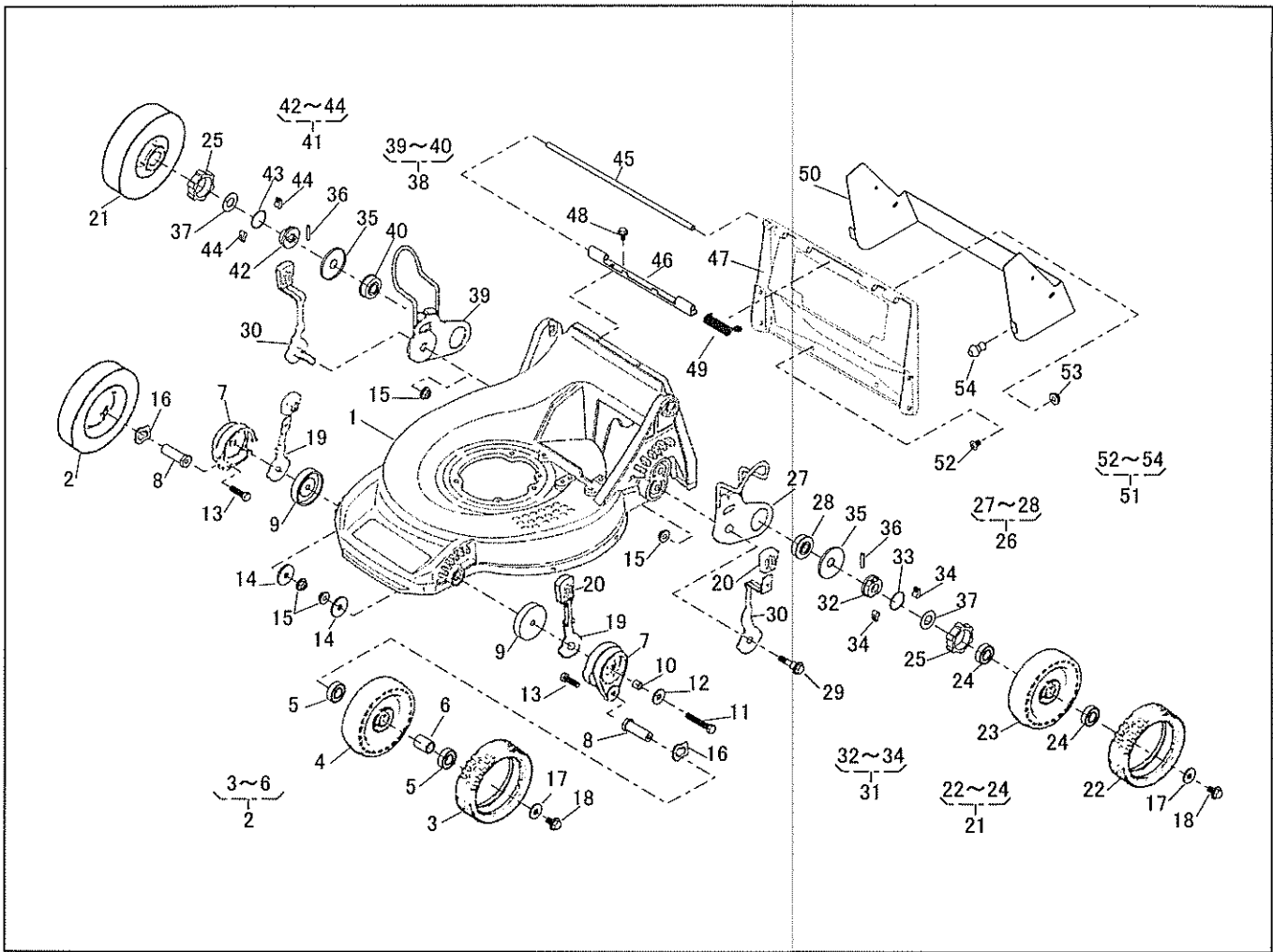


## PARTS LIST

### MODEL : SLM5360HXA (SARP)

46014-158-2

REF. No.	PARTS No.			PARTS NAME	AI-WHEEL		1/2	REMARKS
					Q'TY INCLUDING	PRICE( )	RECOMM.(%) Lot.100	
1	51043	136	42	HOUSING	1		3	
2	71041	135		WHEEL ASSY(A.W.)	2		3	
3	91086	113		TIRE	2		15	
4				WHEEL	2		-	
5				BEARING	4		-	
6				COLLAR	2		-	
7	11142	133		ADJUSTER	2		3	
8	64014	343		SHAFT	2		3	
9	11102	221		HOLDER	2		3	
10	11083	312		COLLAR	2		3	
11	311L	0850		HEXAGON BOLT	2		10	M8 × 50
12	68036	101		WASHER	2		3	
13	31057	258		BOLT	2		3	
14	68036	112		WASHER	2		3	
15	569L	0800		FLANGE NYLON NUT	4		10	M8
16	664V	0016		WAVE SPRING WASHER	2		5	
17	68036	101		WASHER	4		3	
18	31057	181		HEXAGON BOLT	4		3	
19	11150	101	09	ADJUST LEVER	2		5	
20	36061	121		KNOB	4		3	
21	71041	136		WHEEL ASSY(A.W.)	2		3	
22	91086	113		TIRE	2		15	
23				WHEEL	2		-	
24				BEARING	4		-	
25	11086	119		STOPPER	2		3	
26	71122	101		ADJUSTER ASSY(L)	1		-	
27	11142	104		ADJUSTER	1		3	

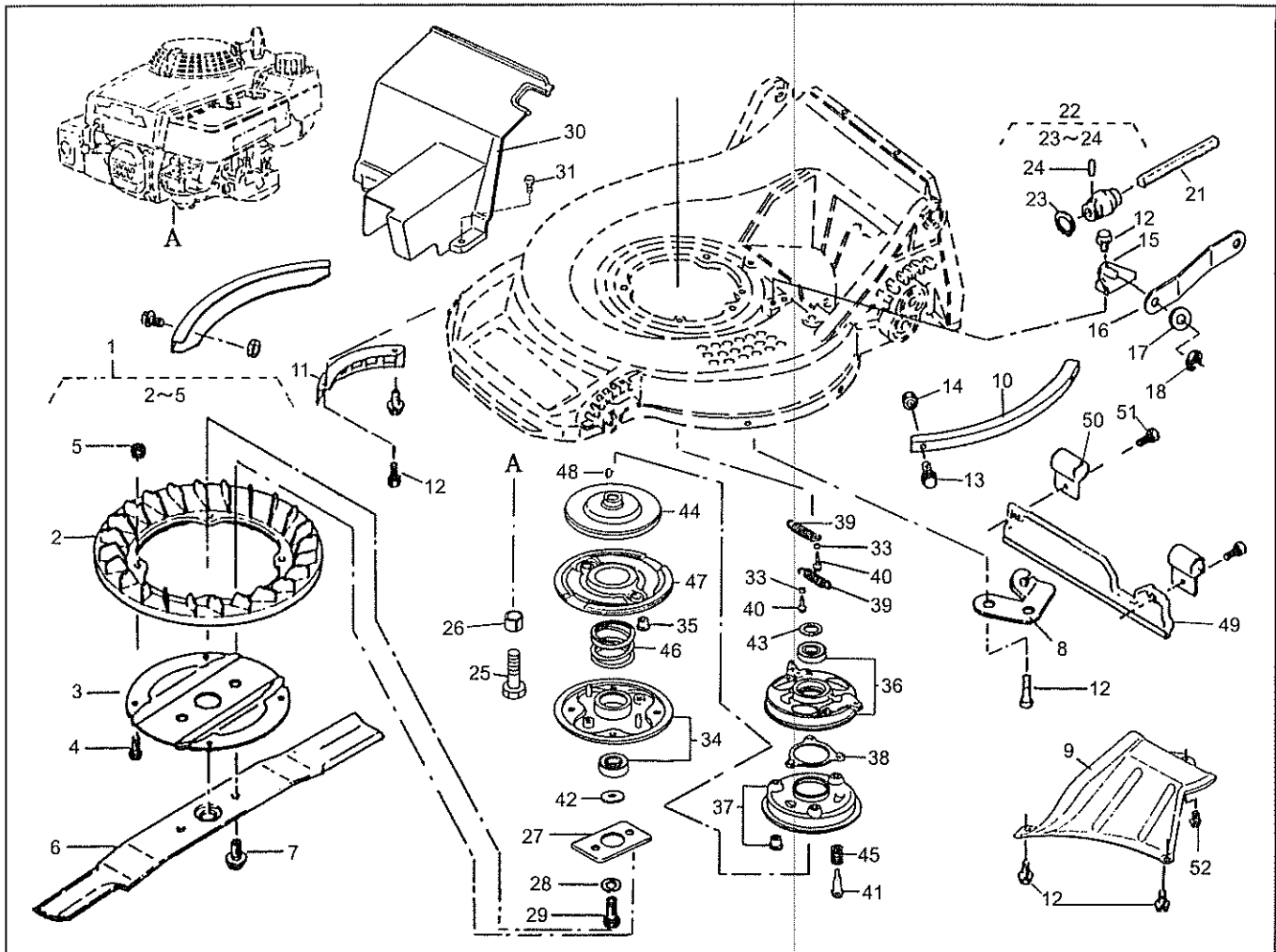


## PARTS LIST

MODEL : SLM5360HXA (SARP)

46014-158-2

REF. No.	PARTS No.		PARTS NAME	AI-WHEEL		2/2		REMARKS
				Q'TY INCLUDING	PRICE( )	RECOMM.(%) Lot.100		
28	945L	0349	BEARING	1		10		
29	31057	132	HEXAGON BOLT	2		5		
30	11150	102	ADJUST LEVER	2		5		
31	71158	102	RATCHET ASSY(L)	1		-		
32	11102	138	HOLDER	1		3		
33	68013	266	SPRING	1		5		
34	31034	170	PIN	2		3		
35	61003	112	THRUST PLATE	2		10		
36	31034	137	PIN	2		10		
37	68036	146	WASHER	2		3		
38	71122	102	ADJUSTER ASSY(R)	1		-		
39	11142	105	ADJUSTER	1		3		
40	945L	0349	BEARING	1		10		
41	71158	101	RATCHET ASSY(R)	1		3		
42	11102	138	HOLDER	1		3		
43	68013	266	SPRING	1		5		
44	31034	170	PIN	2		3		
45	64014	234	SHAFT	1		3		
46	11113	292	STAY	1		3		
47	36068	171	GUARD	1		3		
48	342L	0612	FLANGE TAPPING BOLT	2		3		M6 × 12
49	68013	336	SPRING	1		3		
50	36065	298	COVER	1		3		
51	71137	194	BOLT AND NUT SET	1		-		
52	376L	0508	(+)TRUSS SCREW	6		3		M5 × 8
53	579L	0500	FLANGE NUT	6		3		M5
54	36006	113	ABSORBER	2		10		

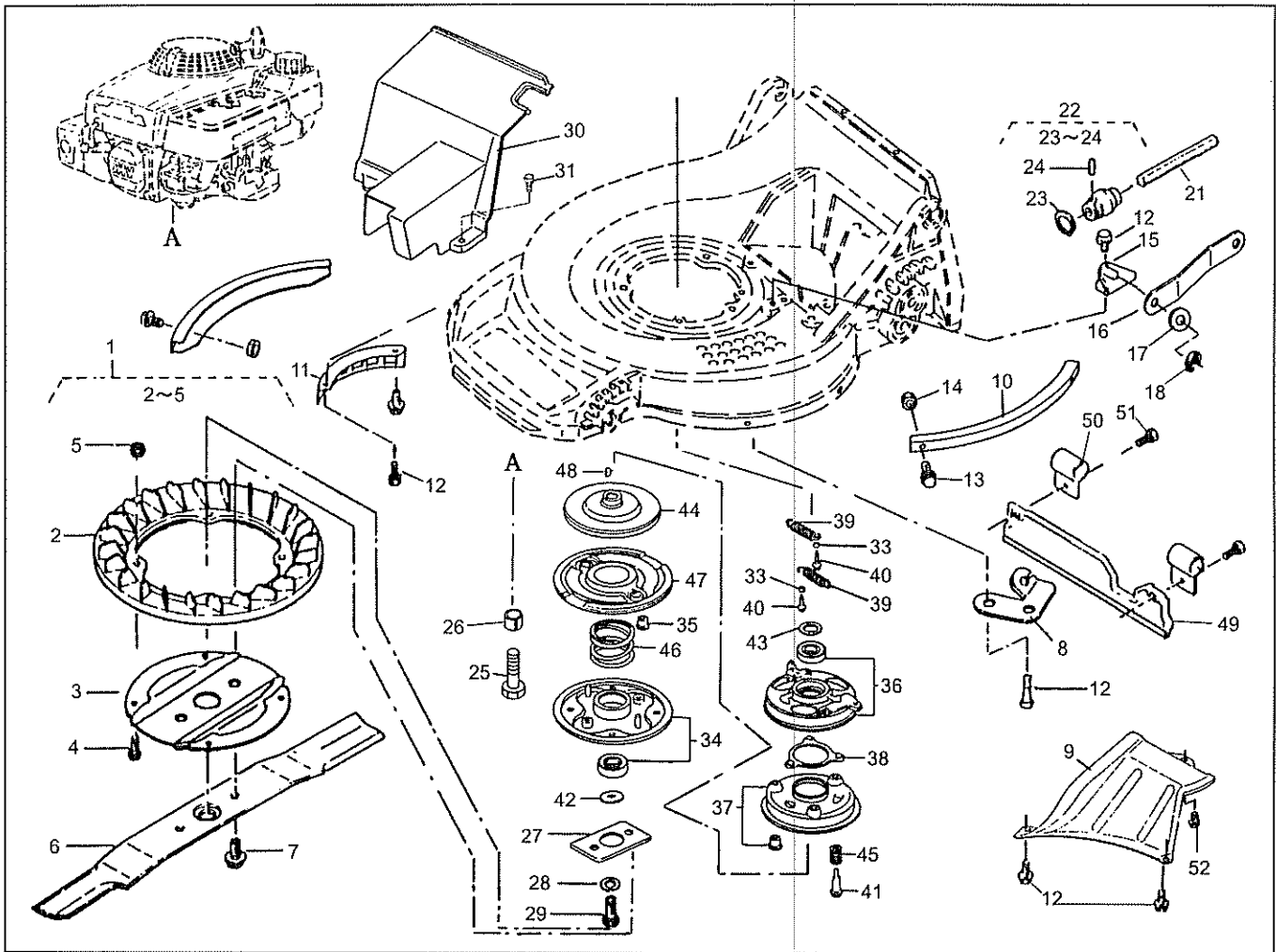


## PARTS LIST

MODEL : LM5360HXA (KAAZ)

46014-154-1

REF. No.	PARTS No.		PARTS NAME	GRASS-CUTTING			1/2	26. Dec, 2003
				Q'TY	PRICE( )	RECOMM.(%)		
			INCLUDING			Lot.100	REMARKS	
1	71082	110	FAN ASSY	1				
2	51125	103	FAN	1			5	
3	11102	151	HOLDER	1			5	
4	335L	0620	FLANGE BOLT	4			5	M6 × 20
5	569L	0600	FLANGE NYLON NUT	4			5	M6
6	91014	159	BLADE	1			15	
7	31057	197	HEXAGON BOLT	2			15	
8	51002	118	WIRE HOLDER	1			3	
9	36065	300	COVER	1			10	
10	51090	117 09	PROTECTOR	2			5	
11	36065	180	COVER	1			3	
12	342L	0612	FLANGE TAPPING BOLT	8			3	M6 × 12
13	335L	0610	FLANGE BOLT	4			5	M6 × 10
14	512L	0600	HEXAGON NUT	4			3	M6
15	11006	113	STAY C.P.	1			5	
16	91049	116	CONNECTOR	1			5	
17	68036	280	WASHER	1			3	10.5x18x1.6
18	816V	0800	E-SNAP RING	1			5	φ8
19								
20								
21	64014	222	SHAFT	1			3	
22	91097	101	UNIVERSAL JOINT	1			3	
23	812V	2000	C-SNAP RING FOR SHAFT	1			1	φ20
24	717B	0418	PARALLEL PIN	1			5	φ4 × 18
25	31057	243	HEXAGON BOLT	4			3	
26	61024	142	SPACER	3			3	
27	61024	169	SPACER	1			3	

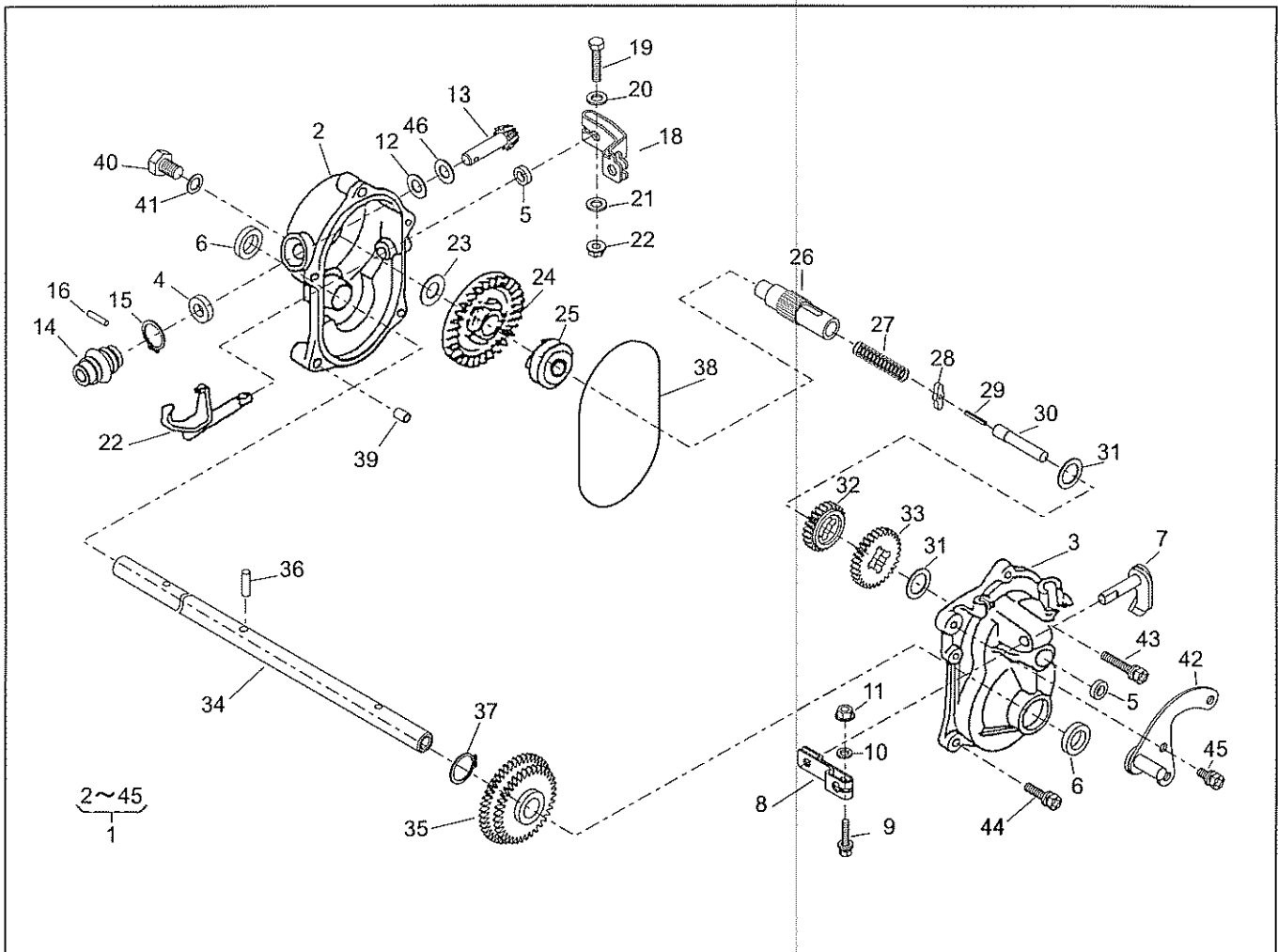


## PARTS LIST

MODEL : LM5360HXA (KAAZ)

46014-154-1

REF. No.	PARTS No.		PARTS NAME	GRASS-CUTTING		PRICE( )	2/2		26. Dec, 2003
				Q'TY	INCLUDING		RECOMM.(%)	Lot.100	
28	671V	1000	CONICAL SPRING WASHER	1			3		
29	31057	196	HEXAGON BOLT	1			3		
30	36065	397	COVER	1			3		
31	342L	0616	FLANGE BOLT TAPPING	1			3		M6 × 16
32	71067	106	BRAKE ASSY	1			-		
33	19512	883 000	FAN COLLAR	2			-		
34	72600	VA4 010	BLADE HOLDER ASSY	1			3		
35	72613	VA4 000	BLADE HOLDER BUSH	2			5		
36	75090	VA4 030	BALL CONTROL PLATE	1			10		
37	75100	VA4 010	BRAKE C.P.	1			3		
38	75110	VA4 000	BALL RETAINER C.P.	1			10		
39	75182	VA3 J00	CLUTCH RETURN SPRING	2			5		
40	90014	952 000	FLANGE BOLT	4			3		
41	90021	VA4 000	SPECIAL BOLT	3			3		
42	90409	952 000	WASHER	1			3		
43	90501	952 010	THRUST WASHER	1			3		
44	75130	VA4 000	DRIVE DISK	1			3		
45	75132	VA4 000	BRAKE HOLDER SPRING	3			5		
46	75183	VA3 J00	CLUTCH SPRING	1			3		
47	75150	VA3 J01	DRIVEN DISK C.P.	1			3		
48	94401	16150	WOOD RUFF KEY	1			15		
49	36046	118	SAFETY GUARD	1			3		
50	11012	126	HANGER BAND	2			3		
51	335L	0616	FLANGE BOLT	2			15		M6 × 16
52	342J	0610	FLANGE BOLT TAPPING	1			3		M6 × 10



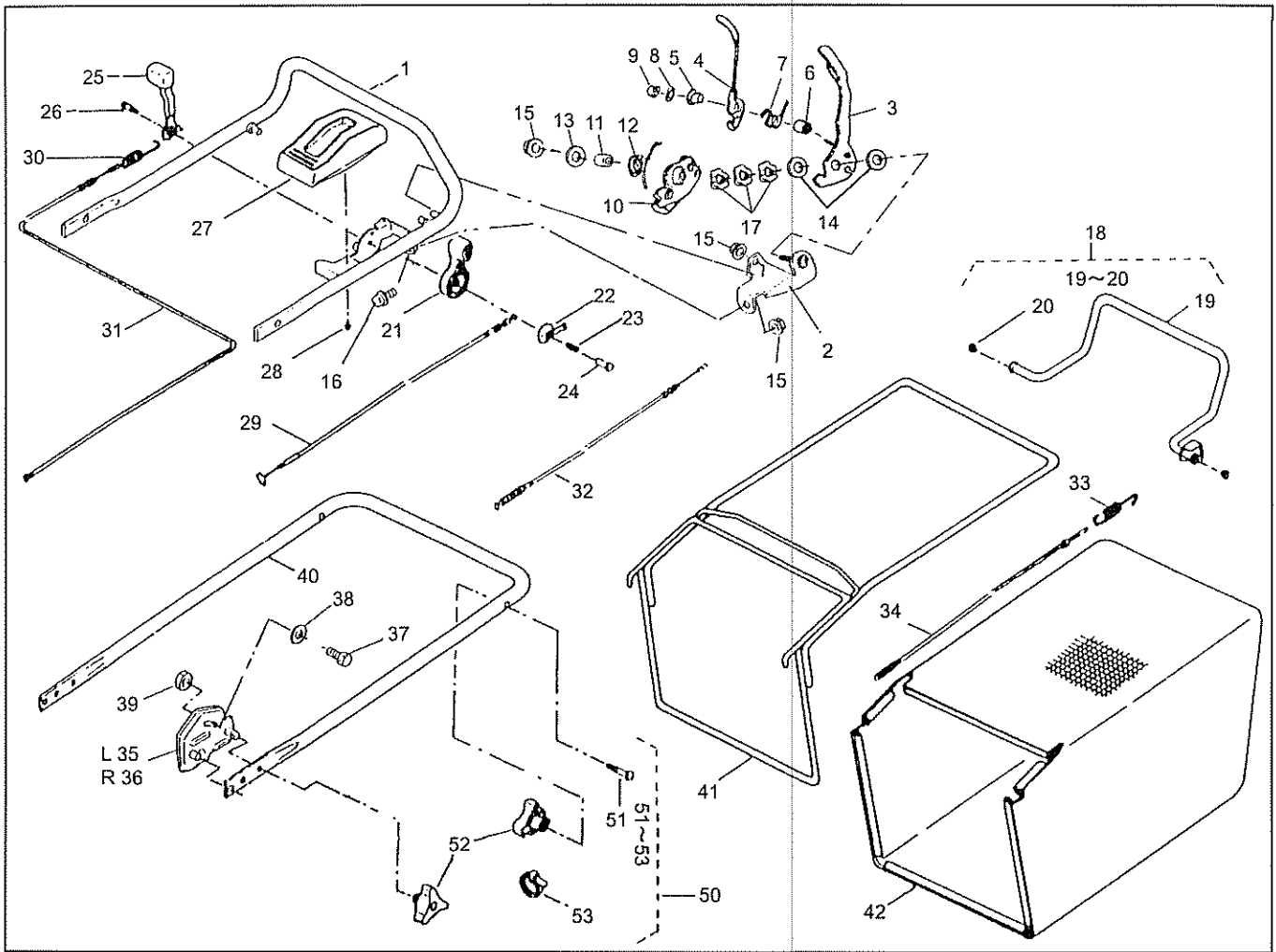
## PARTS LIST

### MODEL : SLM5360HXA (SARP)

46014-158-1

REF. No.	PARTS No.		PARTS NAME	GEAR CASE		1/2	RECOMM.(%) Lot.100	REMARKS
				Q'TY	PRICE( )			
				INCLUDING				
1	71008	275	GEAR CASE ASSY	1			-	
2	51001	195	GEAR CASE	1			3	
3	51001	196	GEAR CASE	1			3	
4	61002	161	OIL SEAL	1			5	SD 10 20 5
5	61002	162	OIL SEAL	2			5	SD 8 14 4
6	61002	163	OIL SEAL	2			5	SD 15 24 5
7	64024	104	THIFTER SHAFT	1			3	
8	11104	119	ARM	1			3	
9	320L	0525	HEXAGON BOLT(PW)	1			3	M5 × 25
10	611L	0500	PLAIN WASHER	1			3	M5
11	571L	0500	FLANGE NUT	1			3	M5
12	61003	109	THRUST PLATE	1			5	
13	78003	130	PINION	1			3	
14	91097	101	UNIVERSAL JOINT	1			3	
15	812V	2000	C-SNAP RING FOR SHAFT		1		1	φ20
16	717B	0418	PARALLEL PIN		1		3	φ4 × 18
17	11097	106	SHIFTER FORK	1			3	
18	11104	137	ARM	1			3	
19	311M	0630	(+)HEXAGON BOLT	1			3	M6 × 30
20	611L	0600	PLAIN WASHER	1			3	M6
21	613L	0600	PLAIN WASHER	1			3	M6
22	571L	0600	FLANGE NUT	1			3	M6
23	61024	117	SPACER	1			5	
24	78001	162	BEVEL GEAR	1			3	
25	11129	107	CLUTCH	1			3	
26	64014	236	SHAFT	1			3	
27	68013	262	SPRING	1			3	





## PARTS LIST

MODEL : LM5360HXA (KAAZ)

46014-154

REF. No.	PARTS No.		PARTS NAME	HANDLE		1/2	RECOMM.(%)	REMARKS
				Q'TY	PRICE( )	Lot.100		
				INCLUDING				
1	51027	242	HANDLE	1			3	
2	11113	396 09	STAY	1			5	
3	11095	160 09	LEVER	1			10	
4	11095	161 09	LEVER	1			10	
5	76007	131	BUSH	1			10	
6	61024	206	SPACER	1			5	
7	68013	334	SPRING	1			5	
8	68036	198	WASHER	1			3	
9	563L	0600	U-HEXAGON CAP NUT	1			5	M6
10	11109	108	LINK	1			5	
11	61024	207	SPACER	1			10	
12	68013	335	SPRING	1			10	
13	68036	262	WASHER	1			5	
14	68036	200	WASHER	2			5	
15	569L	0800	FLANGE NYLON NUT	3			5	M8
16	335L	0820	FLANGE BOLT	1			3	M8 x 20
17	664J	1600	WAVE SPRING WASHER	3			3	M16
18	71161	111 09	LEVER ASSY	1			-	
19			LEVER		1		-	
20	76007	131	BUSH		2		15	
21	91010	169	THROTTLE LEVER	1			10	
22	61003	113	THRUST PLATE	1			5	
23	68013	356	SPRING	1			3	
24	31058	168	HEXAGON NUT	1			3	
25	11095	117	LEVER	1			3	
26	31062	109	PRE-COAT LOCK BOLT	1			5	
27	71900	796	COVER ASSY	1			3	

